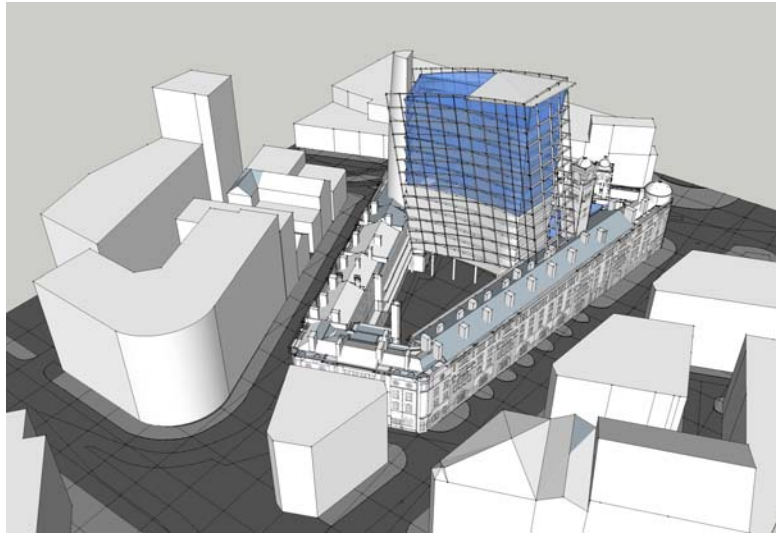


[11]

January 2010 Update

So sorry that further delays have been met in attempting to deliver this wonderful development to our clients. Some of whom we know have been greatly looking forward to it. Further apologies for not updating this page in a while.

As you may be aware, we had an ambitious scheme of highlighting this landmark building by bringing together the grand old masterful architecture of the original fire station with a modern 15 storey architecturally unique intervention, planned by renowned architects Purcell Miller Tritton, the intention being to once again make this a landmark, gateway building into Manchester.



This has been successfully achieved with many famous listed buildings in London making them into even greater attractions.

It was felt that this building required a high quality intervention of this level, as the building has been swamped by some high rise new build of insignificance in the area and due the dramatic change in the economic climate

Unfortunately, we have now again been thwarted and are now submitting a scheme of lesser significance and power. We will let you know more about this in February and it is hoped that the progress from here will be smoother.

We are sure there are those amongst you who would have some positive suggestions. If you feel you can add to our proposals, please let us know by emailing us at:

thefirestation@britanniahotels.com