



Conference & Events

GRAND HOTEL GOSFORTH PARK

ELITE VENUE SELECTION



Grand Hotel

GOSFORTH PARK

ELITE VENUE SELECTION



Welcome to Grand Hotel Gosforth Park

The Grand Hotel Gosforth Park welcomes you to the Northeast of England, featuring comfortable accommodations and range of excellent amenities.

Planning an event? Whether it's an intimate gathering, a conference, or a large dinner, the Grand Hotel Gosforth Park can host up to 600 guests.

Feel at home in your hotel room or suite, equipped with a flat-screen TV, a luxurious mattress, high-speed Wi-Fi, and a convenient workspace.

Unwind during your stay by visiting our health club's sauna and steam room, staying active at our on-site gym, or taking a refreshing dip in our heated pool.

SPECIALISING in Events and Meetings

Choosing the right location and venue is crucial when organizing a corporate event, and at Grand Hotel Gosforth Park, we have everything you need.

Situated conveniently just off the A1, we offer 300 complimentary parking spaces. Newcastle Airport is only 9 minutes away, making it an ideal choice for delegates arriving by air. Additionally, the nearest train station, Central Station, is just 5 miles from our hotel.

For more details about our excellent corporate packages, please get in touch with us directly.





Refreshment Breaks and Lunches

Driven by the preferences of our guests, our Executive Chef has crafted a dynamic selection of food and beverage options that are sure to engage, inspire, and energise. With a daily changing menu featuring soups, salads, and vegetarian dishes, you'll find yourself with an abundance of choices.

Decide where to enjoy your mid-morning and afternoon breaks, as well as your lunches. You can work throughout the day with the convenience of in-room dining, or take in the breathtaking views from our restaurant. Alternatively, consider hosting a networking lunch in one of our various breakout spaces.

Be Inspired at Grand Hotel Gosforth Park

We provide an outstanding selection of 14 event spaces capable of accommodating up to 600 guests, which can be customised to meet your unique needs. This versatility makes us the perfect location for a wide range of events, from small meetings to large conferences and elegant gala dinners. You will have all the necessary resources at your disposal to present your business effectively, and our team will be ready to support you with the arrangements for the day.



CAPACITIES & DIMENSIONS

EVENT ROOMS																
	Theatre	U-Shape	Classroom	Boardroom	Cabaret	Dinner Dance	Banquet	Length (m)	Width (m)	Ceiling Height (m)	Natural Daylight	3 Phase Power	Blackout	Floor Level	Air Con	Disabled Access
The Grandstand (+ Foyer)	600	N/A	300	N/A	350	500	600	35.5	23	3.6	NO	YES	YES	G	YES	YES
The Grandstand Suite	600	N/A	350	N/A	300	350	550	35.5	15.5	3.6	YES	YES	YES	G	YES	YES
The Grandstand 1&2	300	N/A	N/A	N/A	144	180	240	31	20	3.6	NO	YES	YES	G	YES	YES
The Grandstand 3&4	250	N/A	N/A	N/A	96	96	144	31	15.5	3.6	NO	NO	YES	G	YES	YES
The Grandstand 1 Suite	140	42	50	38	72	N/A	120	15.5	10	3.6	NO	YES	YES	G	YES	YES
The Grandstand 2 Suite	140	42	50	38	72	N/A	120	15.5	10	3.6	NO	NO	YES	G	YES	YES
The Grandstand 3 Suite	130	39	40	38	48	N/A	96	15.5	8	3.6	NO	NO	YES	G	YES	YES
The Grandstand 4 Suite	120	35	40	38	48	N/A	96	15.5	7.5	3.6	NO	NO	YES	G	YES	YES
The Classics Suite	300	N/A	120	N/A	144	150	180	22.5	12.5	3.2	YES	NO	YES	G	YES	YES
The Classics Suite 1	100	24	40	36	48	N/A	60	12.5	7.5	3.2	YES	NO	YES	G	YES	YES
The Classics Suite 2	100	24	40	36	48	N/A	72	12.5	7.5	3.2	YES	NO	YES	G	YES	YES
The Classics Suite 3	100	24	40	36	48	N/A	72	12.5	7.5	3.2	YES	NO	YES	G	YES	YES
The Racecourse Suite	120	N/A	50	N/A	80	N/A	100	30.5	5	3	YES	NO	YES	F	YES	YES
The Racecourse Suite 1	60	24	30	30	32	N/A	48	12.5	7.5	3	YES	NO	YES	F	YES	YES
The Racecourse Suite 2	20	8	8	10	N/A	N/A	10	5	5	3	YES	NO	YES	F	YES	YES
The Racecourse Suite 3	40	18	12	20	16	N/A	24	7.5	5	3	YES	NO	YES	F	YES	YES
The Racecourse Suite 4	20	8	8	10	N/A	N/A	10	5	5	3	YES	NO	YES	F	YES	YES
The Boardroom Suite	N/A	N/A	N/A	20	N/A	N/A	N/A	7.5	4	3	YES	NO	YES	F	YES	YES
The Ash Suite	22	12	10	15	N/A	N/A	N/A	8	4	2.7	YES	NO	YES	G	YES	YES
The Beech Suite	22	12	10	15	N/A	N/A	N/A	8	4	2.7	YES	NO	YES	G	YES	YES

The Grandstand Suite

Enter the magnificent Grandstand Suite. As the largest venue, this huge space can host up to 600 guests for a theatre-style presentation or 500 for a dinner or buffet reception. The exclusive bar and reception space provide an ideal setting for pre-dinner cocktails or breakout lunches.

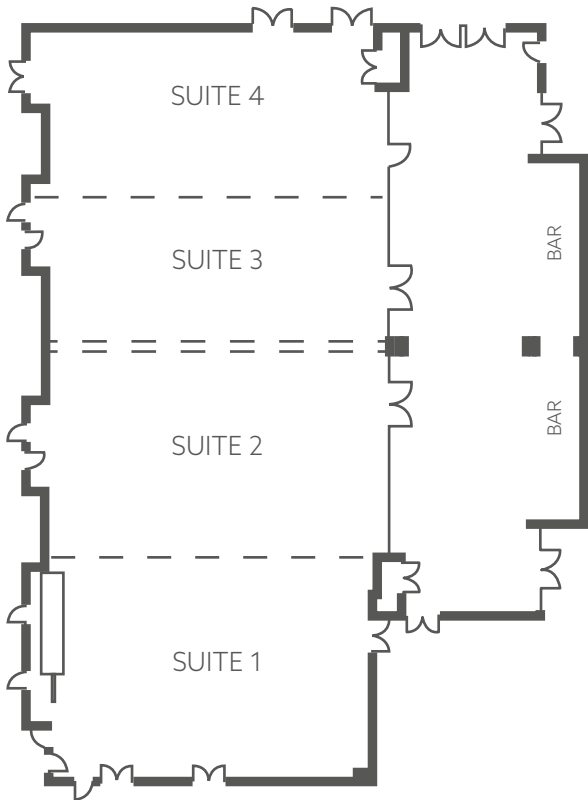
Featuring lofty ceilings and state-of-the-art lighting and audio systems, every guest can fully engage with the experience.

Stylish and sophisticated, the Grandstand Suite can be adapted in various configurations, making it suitable for any occasion.



The Grandstand Suite room information at a glance

- Up to 600 delegates
- Divisible into four suites
- Large built-in dance floor (can be covered)
- Exclusive bar and reception area
- Room dimensions (Length 22 metres x Width 13 metres - Ceiling Height 7.3 metres)
- Free Wi-Fi included in conference room

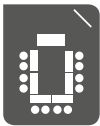


Theatre



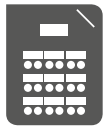
600

U Shape



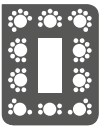
N/A

Classroom



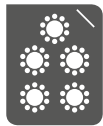
350

Cabaret



350

Banquet



550

The Classics Suite

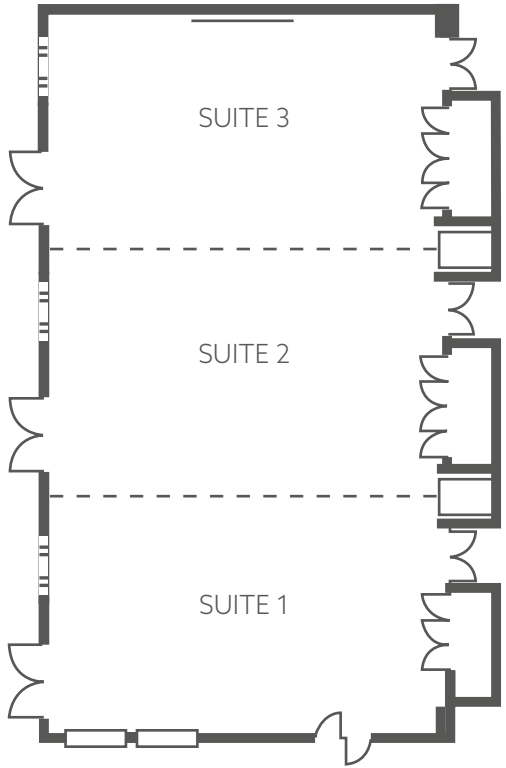
Welcome to the splendid Classics Suite, an expansive area that radiates sophistication and allure. This room boasts large windows on one side, offering exquisite decor & natural light.

The suite is adorned with chic spot lighting, complemented by the natural light that pours in through the windows, creating a cosy and welcoming ambiance for any event or gathering. Additionally, the Classics Suite can be divided into three smaller suites, catering to a variety of occasions.



The Classics Suite room information at a glance

- Up to 300 delegates
- Located on the ground floor
- Divisible into three suites
- Exquisite décor, natural light
- Room dimensions (Length 24 metres x Width 13.3 metres - Ceiling Height 3 metres)
- Free Wi-Fi included in conference room

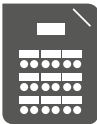


Theatre



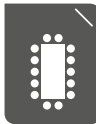
300
100x3

Classroom



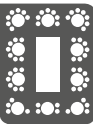
120
40x3

Boardroom



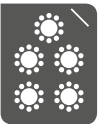
36x3

Cabaret



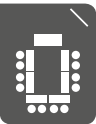
144
48x3

Banquet



180
60x3

U Shape



24x3

The Racecourse Suite

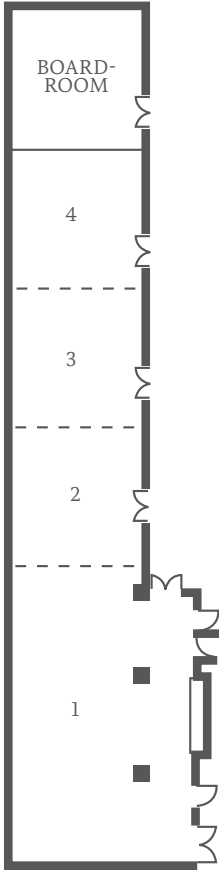
The Racecourse Suite is an elongated space with expansive windows that provide a view of Gosforth Park.

Though a bit more compact, this room radiates elegance and comfort. Situated on the first floor, it offers an inviting atmosphere for meetings and dining, enhanced by the presence of natural light.



The Racecourse Suite room information at a glance

- Up to 120 delegates
- Located on the first floor
- Room dimensions (Length 16 metres x Width 5 metres - Ceiling Height 3 metres)
- Divisible into four rooms
- Free Wi-Fi included in conference room

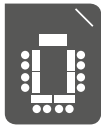


Theatre



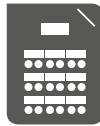
120

U Shape



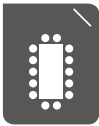
30

Classroom



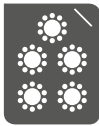
50

Boardroom



36

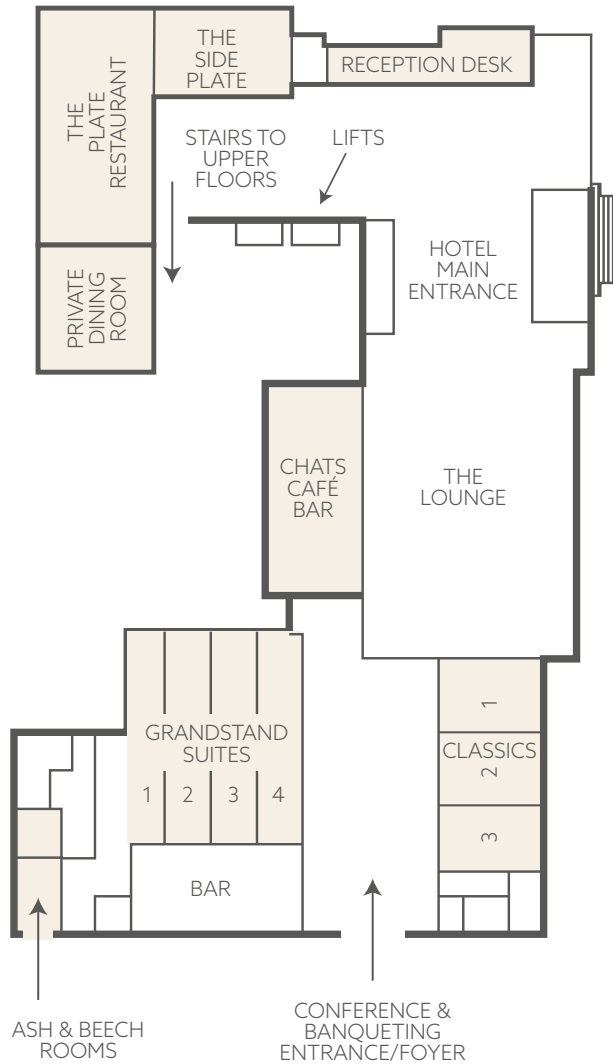
Banquet



100

Room Layout

For Remaining Rooms



The Boardroom Suite

- Can seat up to **15 Boardroom**
- Located on the first floor next to next to the Racecourse Suite

The Ash Room

- Can seat **22 Theatre, 12 U-shaped, 10 Classroom, and 15 Boardroom**
- Perfect solution for small groups or one-on-one discussions

The Beech Room

- Can seat **22 Theatre, 12 U-shaped, 10 Classroom, and 15 Boardroom**
- Perfect solution for small groups or one-on-one discussions

Extend Your Stay

Our spacious, elegantly appointed bedrooms keep you connected for both business and leisure. Each en-suite room features tea and coffee-making facilities, a TV, hairdryer, Wi-Fi, and essential amenities. The Grand Hotel Gosforth Park is the perfect base for exploring the local area.

Overnight guests can enjoy our leisure centre, complete with an indoor heated pool and fitness equipment, though some packages may incur a small fee. Beauty spa treatments are also available for an additional cost.

Hotel Facilities

- The Plate Restaurant
- Chats Café Bar
- The Lounge Bar
- 14 Conference Suites
- Complimentary On-site Car Parking
- Free Wi-Fi
- Spa Complex including: Gymnasium, Heated Swimming Pool, Sauna, Steam Room, Solarium, Beauty Salon* & Relaxation Rooms. (Free use of the leisure facilities for corporate clients. Charges may apply for beauty treatments)



What to do Next

If you decide that the Grand Hotel Gosforth Park is the perfect venue for your event, check availability and book with us.

Our dedicated events team will be able to answer any questions you have about your forthcoming event.

CONTACT INFORMATION

Tel: 0191 236 4111 opt. 2

Email: sales760@theelitevenueselection.co.uk

Grand Hotel Gosforth Park,
Newcastle, NE3 5HN.

Scan the QR code on your
smartphone or tablet
camera to visit our
social media.



