

EVERYTHING  
UNDER  
ONE ROOF

# THE ADELPHI HOTEL

*Where history meets hospitality*



TEL: 0151 709 7200 ● Ranelagh Place Liverpool. L3 5UL  
EMAIL: [Events700@theelitevenueselection.co.uk](mailto:Events700@theelitevenueselection.co.uk) ●

# PERFECT LOCATION

REASONS WHY THE ADELPHI HOTEL IS THE PERFECT LOCATION FOR YOUR CONFERENCE OR EVENT.

ROYAL LIVER BUILDINGS.



## HISTORY

Completed in 1914, we are one of the oldest hotels in Liverpool. Steeped in rich history and tradition we are located right in the heart of our vibrant city.

## SUITES

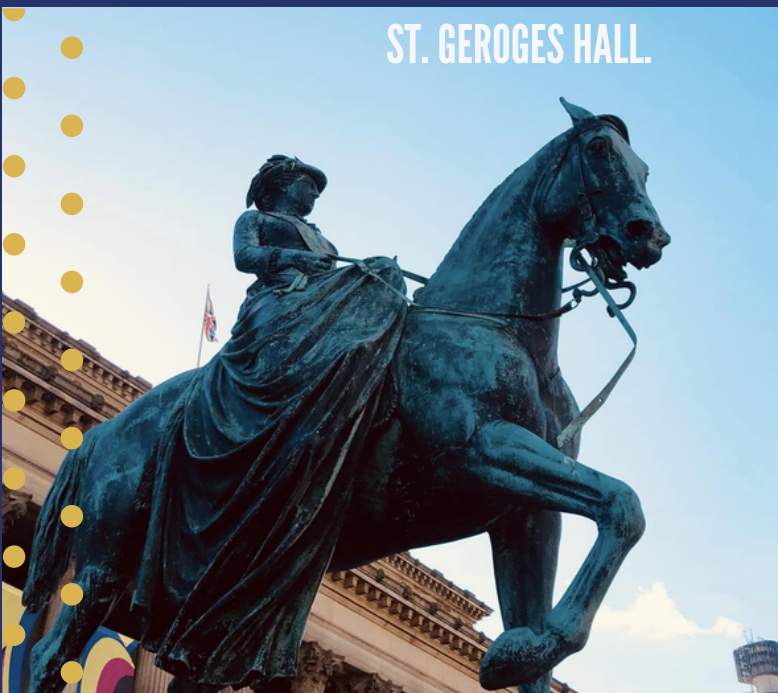
We boast over 400 en-suite rooms including a number of bespoke suites.

## AMENITIES

Close to all major transportation links, we are right on the doorstep of eclectic and diverse bars and restaurants which perfectly reflect the cities culture.

Exhibiting areas starting from 450m2 we have a conferencing capacity of up to 600 delegates.

ST. GEROGES HALL.







LYDIA ROWLANDS - "ON MY MIND"



THE AMAZING SUE JOHNSTON ON SET IN OUR 'DERBY' SUITE

# MUSIC. ART. CULTURE.

MIKE BLUE - "SAPPHIRE"

WE ARE PROUD TO BOAST  
THE PERFECT VENUE FOR  
LARGE SCALE EVENTS, SUCH  
AS INTERNATIONAL BEATLES  
WEEK AND LIVERPOOL LIVE  
AID, AS WELL AS PROVIDING  
BEAUTIFUL BACKDROPS FOR  
YOUR MUSIC VIDEOS

# LIVERPOOL LIME STREET STATION



A short walk from  
Liverpool's primary Train  
Station, just head south  
down Lime Street and  
the hotel is on your left -  
you can't miss us!



**SCAN TO  
FIND US**

# HOW TO FIND US



**LIVERPOOL JOHN  
LENNON AIRPORT.**



# DELEGATE RATES

## DAY RATE:

Main Conference Room set to your specification / Flipchart and pens / Water and glasses / Tea & Coffee with snack / Three Course Conference Buffet with Coffee

---

24 HOUR RATE UPGRADE INCLUDES: OVERNIGHT ACCOMMODATION, FULL ENGLISH BREAKFAST AND THREE COURSE DINNER

(COMPLIMENTARY CAR PARKING FOR TRAINER ALSO INCLUDED)



# DDR MENU

# SELECTOR MENU

# BUFFET MENU

All of our Menus can be tailored specifically for your event but here you can find examples of some of the culinary delights our Executive chef Troy can offer.

**Freshly Baked Croissants**

~

**Assorted Muffins**

~

**Cured Meat Platters**

~

**Homemade Sausage Rolls**

~

**Millionaires Shortbread**

**Thai Fish Cakes**

~

**Rack of Glazed Lamb**

~

**Pan Fried Chicken Breast**

~

**Roasted Duck Breast**

~

**Dark Chocolate Delice**

**Pasta Salad**

~

**Sweet Chili Chicken Skewers**

~

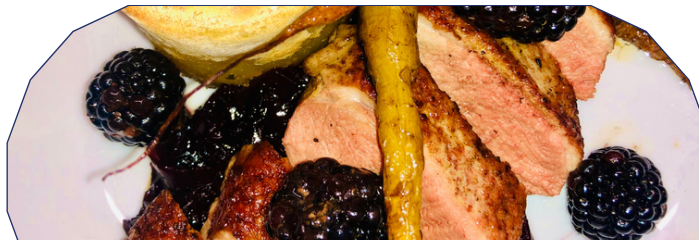
**Chicken Jalfrezi**

~

**Hickory BBQ Ribs**

~

**Strawberry Cheesecake**





# EVENTS & CONFERENCES

OUR ICONIC GRAND LOUNGE IS THE PERFECT DRINKS RECEPTION AREA



WE OFFER 20 OPULENT, EDWARDIAN-STYLE FUNCTION ROOMS THAT CAN HOLD UP 650 DELEGATES

FROM GALA DINNERS, AWARDS PRESENTATIONS, MUSICAL EVENTS AND MORE... WE ARE THE PERFECT HOME FOR EVERY OCCASION



MORE LIVE MUSIC



OUR 'BANQUETING HALL' UP IN LIGHTS AHEAD OF A GALA DINNER



OUR 'SEFTON' SUITE DRESSED FOR A DINNER

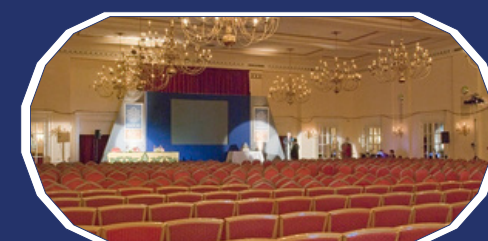
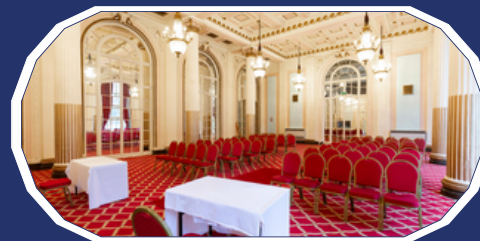


OUR ICONIC 'DERBY' STAIRCASE MAKES FOR THE PERFECT PHOTO OPPORTUNITY



LIVERPOOL LIVE AID IN FULL SWING IN OUR 'BANQUETING HALL'

# ROOM CAPACITIES



Room Name	Theatre	U Shaped	Classroom	Boardroom	Cabaret	Dinner Dance	Banquet
Banqueting Hall	650	-	430	-	400	450	500
Aintree	250	72	200	60	200	240	240
Lancaster	250	72	200	60	200	240	240
Pearce	325	60	170	60	150	150	180
Derby	170	45	72	40	120	150	150
Empire	100	30	50	35	56	50	60
Mersey	60	20	30	28	-	-	-
Crosby	90	35	60	35	64	60	72
Sefton	200	40	105	50	96	120	150
Boardroom	70	30	40	28	-	-	-
Kensington	550	-	400	60	264	300	350
Formby	150	35	100	30	80	100	140
Woolton	30	-	20	15	-	-	-
Gateacre	30	-	20	15	-	-	-
Thornton	30	-	20	15	-	-	-
Executive	24	16	16	16	-	-	-
Lounge	350	-	-	-	-	-	240

PLEASE CLICK [HERE](#) TO SEE OUR ROOM LAYOUTS



# WALL OF FAME

The Adelphi Hotel stands proudly in place since 1827, with the building which now stands opened in 1914. Many famous people have stayed, celebrated events or dined with us at the hotel.

'Hotel' was a 1997 eight-episode BBC 'fly on the wall' production that followed the general day-to-day running of a hotel giving viewers a rare glimpse of life behind the scenes of the Adelphi Hotel in Liverpool. The series first aired 3 November 1997 on BBC1 with the first episode receiving viewing figures on 11 million.

The phrase **"Just cook, will yer?"**

became famous within Liverpool area, following the scenes in an episode when an argument between Deputy manager Brian Birchall and head chef David Smith resulted in the phrase being bellowed by Brian. The outburst became a local catch-phrase and is still used today to our chefs in house.

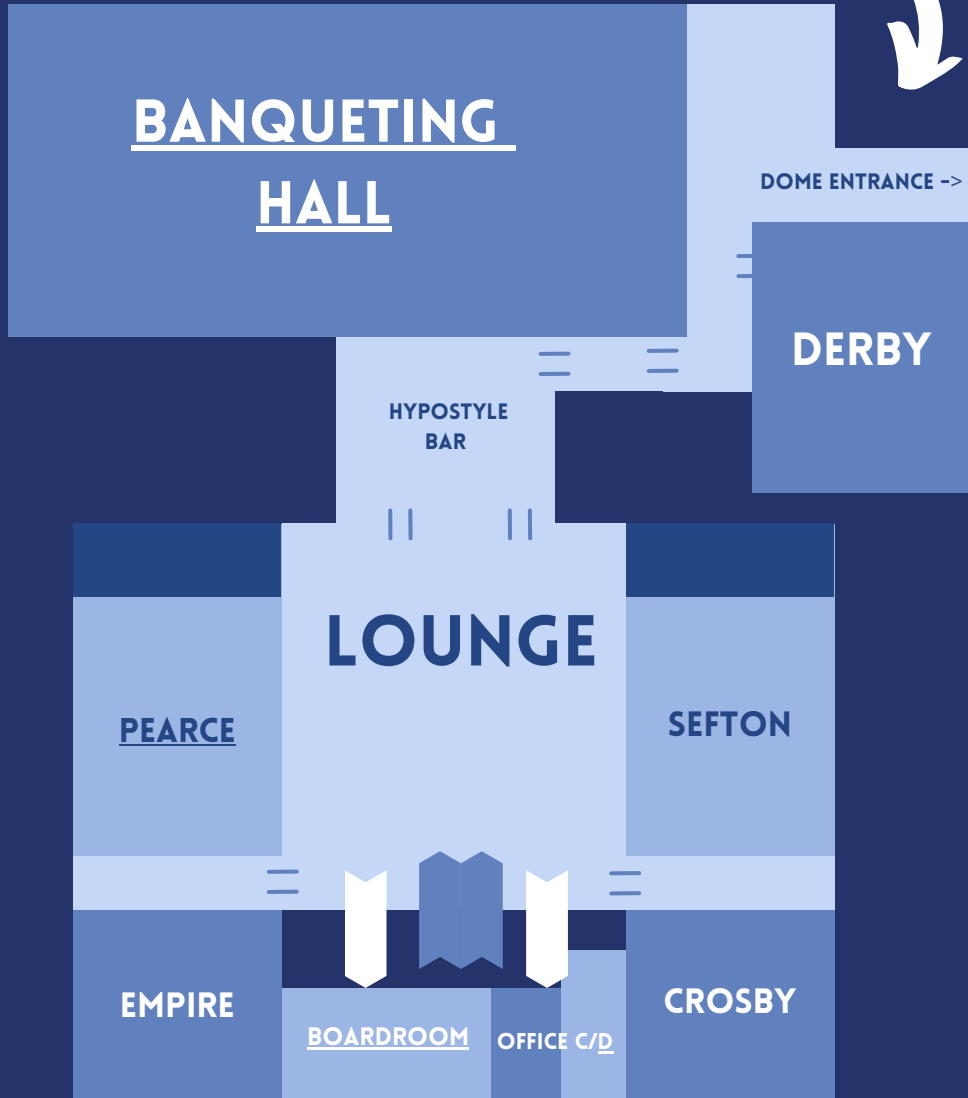
Our list of **Celebrity Cuests** includes.....

**Winston Churchill, Frank Sinatra, David Bowie, Bob Dylan, Harold Wilson, Brian Epstein, Frankie goes to Hollywood, Cilla Black, Ricky Tomlinson, Sue Johnston, Sheridan Smith, Cillian Murphy, Ant & Dec, China Crisis, Dominic West, Barbara Dixon, Ken Dodd, Duran Duran, Roy Rogers & Trigger, Oliver Read, Sir Ben Kinglsey, Sonia, Bucks Fizz and more...**

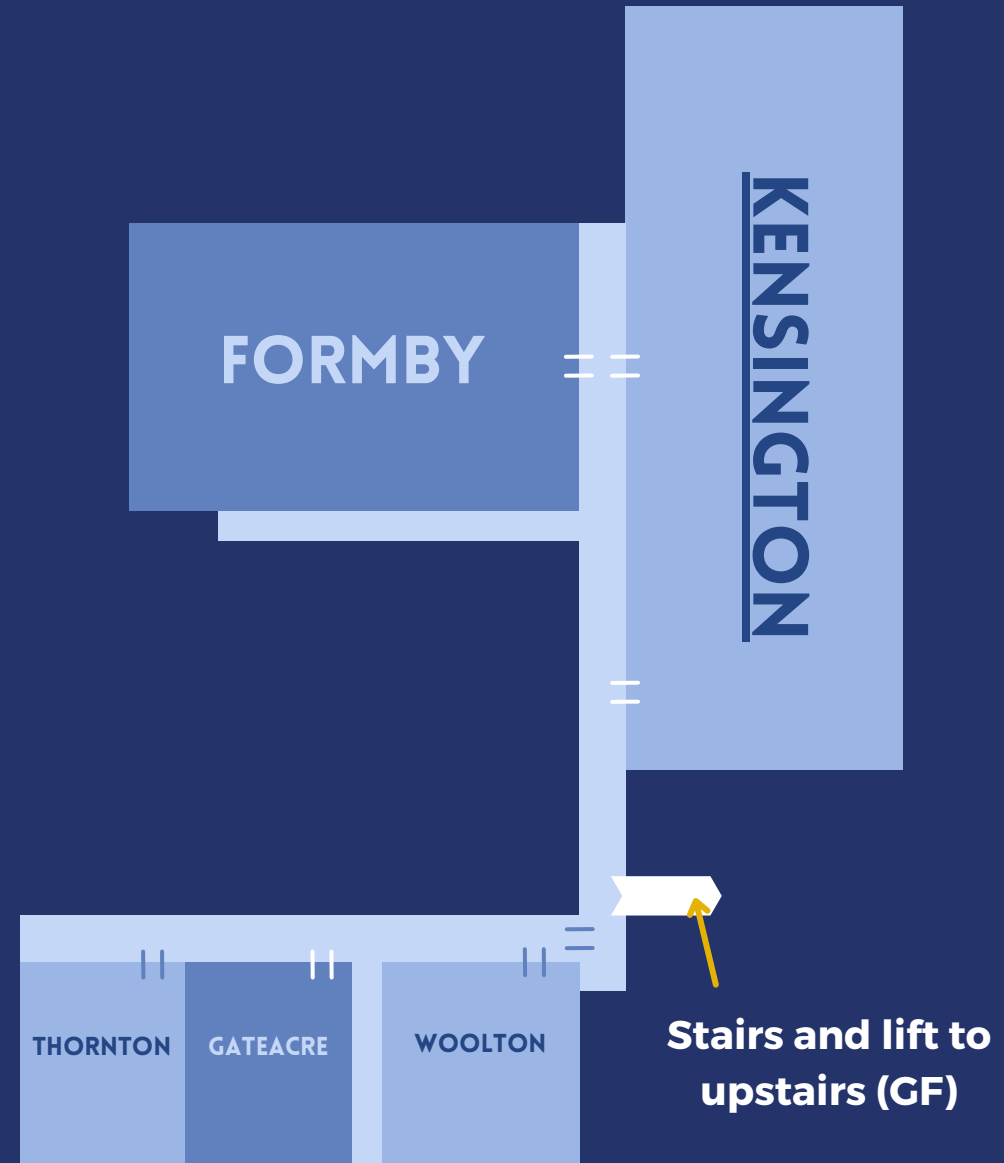


# HOTEL LAYOUT

Lower Ground Entrance (LG)



GROUND FLOOR (GF)

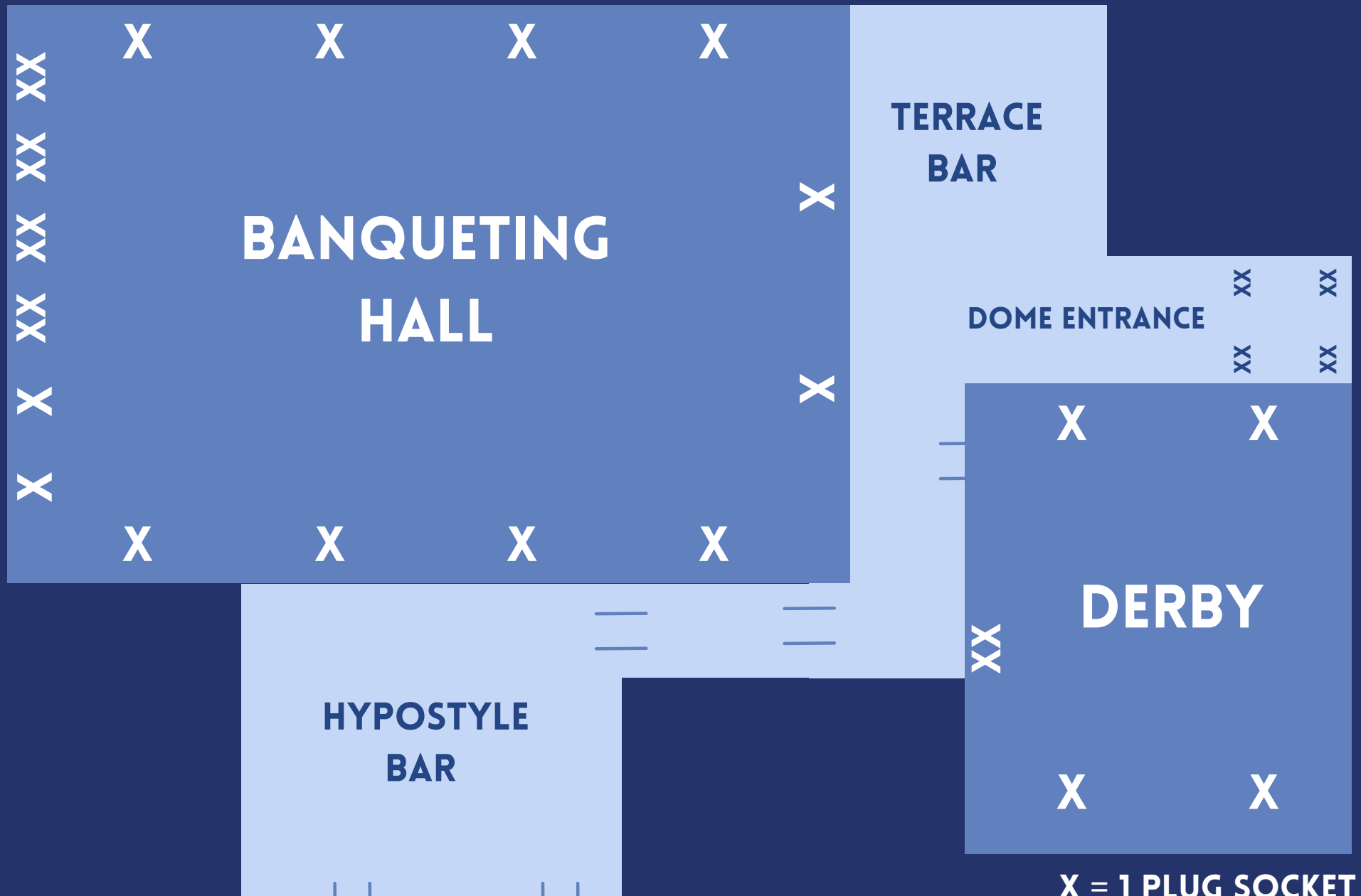


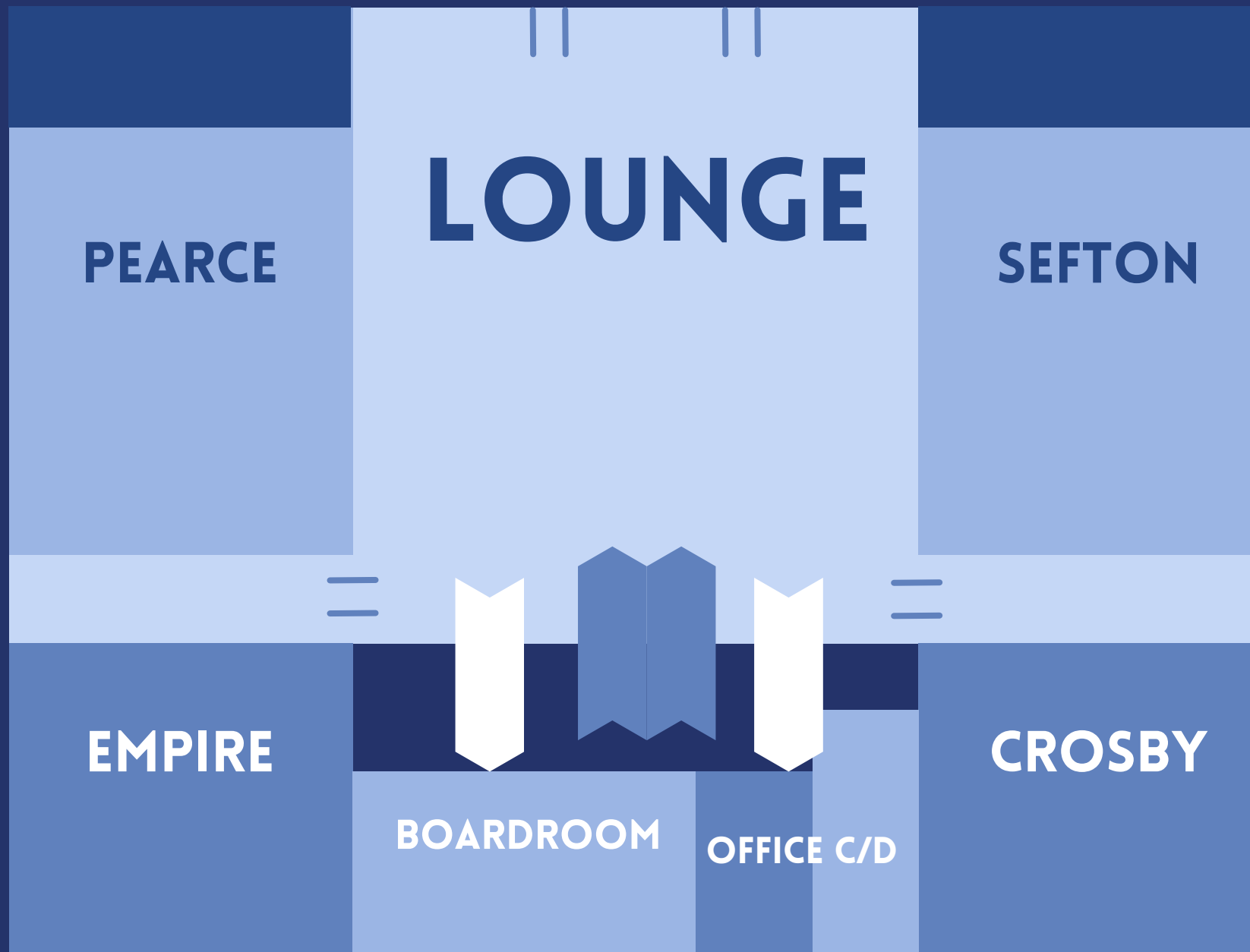
LOWER GROUND (LG)

\*NOT TO SCALE



## GROUND FLOOR





**GROUND FLOOR (GF)**



# *Thank you for your interest*

**WE ARE COMMITTED TO PROVIDING A QUALITY DRIVEN SERVICE, THAT IS BOTH EFFICIENT AND AWARD WORTHY.**

**OUR DEDICATED SALES TEAM ARE VERY HAPPY TO DISCUSS YOUR MEETING, CONFERENCE OR EVENT REQUIREMENTS OVER THE PHONE, EMAIL OR IN A FACE-TO-FACE APPOINTMENT**

● TEL: 0151 709 7200 ●

**EMAIL: [Events700@theelitevenueselection.co.uk](mailto:Events700@theelitevenueselection.co.uk)**

All prices/ facilities are correct at the time of printing. Items within the brochure can be changed without prior notice. Rates and menu items may be subject to change. All room rates based on two sharing a twin or double room.