



BRITANNIAHOTELS 

Function Menus

Wolverhampton

britanniahotels.com/conference-events

Email: Conf706@britanniahotels.com
Tel 01902 429922



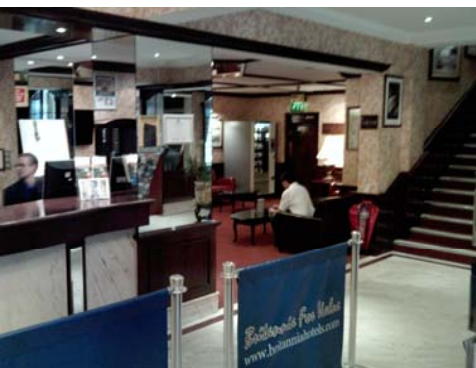
Wolverhampton

The Britannia Wolverhampton Hotel is a stylish Victorian building located in the centre of the city. The location is ideal for Wolverhampton University, the Mander Shopping centre and is conveniently based just five minutes walk from St Georges Metro Station.

The Britannia Wolverhampton hotel offers 117 en-suite comfortably furnished rooms with modern facilities including TV, Telephone and Tea & Coffee making facilities.

The Hotel features Jennys Restaurant, serving Breakfast, Lunch and Dinner offering an array of culinary delights from a la carte to lighter meals. The Stage Door Bar is a popular meeting place, with a wide range of fine wines, beers, spirits and soft drinks, perfect for a drink before or after a visit to the Theatre, or to recharge your batteries during a shopping break.

The Britannia Wolverhampton Hotel is a fantastic corporate venue in with six Banqueting rooms. The rooms are capable of holding up to 130 for all types of events. The conference facilities for this hotel are first class and we can offer fantastic corporate rates for business travel. WIFI is also available FREE of charge throughout the hotels public areas and banqueting rooms.



britanniahotels.com/conference-events



Menu Option 1

Fan of Honeydew Melon with raspberry compote

Homemade Vegetable Soup with Croutons

Chicken in a Oyster and Mushroom Sauce

Fillet of Basa in a Hollandaise Sauce

Traditional Nut Roast with seasonal Vegetables and Potatoes

Profiteroles in a Chocolate Sauce

Orange & Lemon Gateau served with Cream

Freshly Brewed Coffee and Mints

Only £12.95 per person

Menu Option 2

Duck & Orange Pate served with Melba Toast

Strips of Chicken marinated in Lime & Mint served on a bed of continental leaves

Succulent Greenland Prawns dressed in Olive Oil with Chilli, Lemon, Garlic & Coriander

Roast Turkey served with Seasonal Vegetables, Potatoes & Pork Chipolata

Escalope of Pork cooked in Apple & Cider Sauce

Supreme of Salmon in a Cream & Chive Sauce

Spinach & Ricotta Cannelloni

Baked Pear served with Vanilla Ice Cream

Mini Homemade Red Cherry Cheesecakes

Apple Pie served with homemade Custard

Freshly Brewed Coffee and Mints

Only £14.95 per person

Menu Option 3

Salmon Mousse with a Dil & Mustard Centre

Cream of Asparagus Soup

Mushroom Risotto served with Green Leaves

Roast Beef served with all the trimmings

Braised Leg of Lamb in a Thyme Jus

Baked Salmon served in a Watercress Sauce

Mushroom Stroganoff served with Wild Rice

Baked Vanilla Cheesecake

Berry Mess served in a Brandy Basket

Chocolate Fondant served with a selection of Ice Creams

Freshly Brewed Coffee and Mints

Only £16.95 per person

britanniahotels.com/conference-events

Buffet Selector

Assorted sandwiches plus any 4 items for £4.99

Assorted sandwiches plus any 6 items for £6.99

Assorted sandwiches plus any 8 items for £8.99

Choose from....

*Gala Pie
Sausage Rolls
Vegetable Samosa's
Onion Bhaji's
Curly Fries
Potato Wedges
Quiche
Chicken Drumsticks
Mini Vol-Au-Vents
Mixed Salad
Plaice Goujons
Cheese & Onion Lattice
Salmon Bites
Duck Spring Rolls
Lamb Samosa's
Chicken Satay
Vegetable Spring Rolls
Ciabatta Pizza
Garlic Bread*

Fork Buffet

Main Courses

Traditional Beef Lasagne
Chicken Tikka Masala
Selection of Pizza
Supreme of Salmon in a Chive Cream
Penne Pasta in Tomato & Basil Sauce with Mediterranean Vegetables
Escalope of Pork cooked in an Apple and Cider Sauce
Spinach & Ricotta Canneloni
Shephards Pie
Fillet of Basa in a Hollandaise Sauce

Desserts

Chocolate Fudge Cake
Orange & Lemon Gateau served with Cream
Banoffee Cream Pie
Strauberry Gateau
Homemade Red Cherry Cheesecakes
Apple Pie with Homemade Custard

Create your own menu by selecting your choice of 3 main and 2 desserts for the cost of £15.50 per person

Accommodation

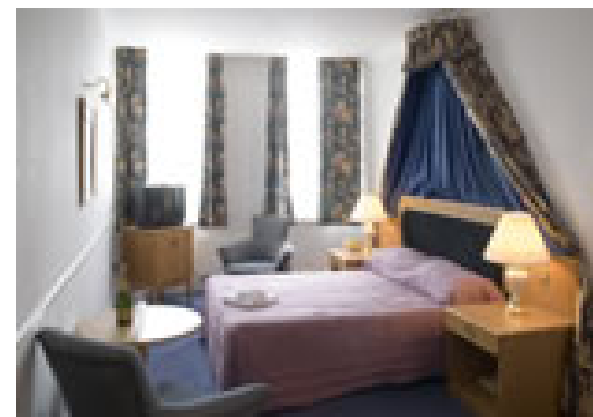


The Britannia Wolverhampton Hotel boasts 117 spacious bedrooms, which demonstrate the Victorian character of the property.

A variety of rooms are available to suit all budgets from Economy to Suite rooms, and multi person rooms are all ready and awaiting your delegates. All bedrooms offer full services and full facilities.

All rooms offer as standard

- TV
- Direct Dial Telephone
- Hair Dryer
- Trouser Press
- Tea & Coffee Making Facilities.
- Bath / Shower
- Work Space



How to find us.

Directions from the M54 Junction 2 Leave at this junction and follow the A449 Stafford Road to Wolverhampton City Centre. The A449 is a dual carriageway direct to the City Centre. As you approach the city centre you will notice the University building on the right hand side, there will be traffic lights to the ring road in front of you. Go through these traffic lights which takes you into Stafford Street, go through pedestrian lights and a mini roundabout (Princess Square) until you face some more traffic lights, at these turn left into Lichfield Street, the hotel is situated 200 yards on the right hand, there is a small lay by outside the hotel for set down only.

Directions from the M54 Junction 3 Leave at this junction and follow the A41 direct into Wolverhampton City Centre, At Chapel Ash Island roundabout take the 1st exit onto the A4150 (signposted Ring Road, Stafford, Cannock) at the second set of traffic lights on the ring road turn right on to Stafford street, go through pedestrian lights and a mini roundabout until you face some more traffic lights, at these turn left into Lichfield Street, the hotel is situated 200 yards on the right hand, there is a small lay by outside the hotel for set down only.

Directions from the M6 Junction 10 (from the South) join the A454 and follow signs into Wolverhampton. As you come to the ring road take the fourth exit from the roundabout signed British Rail and University. Follow the ring road until the next set of traffic lights, turn left and keep straight on, this is Broad Street, do not take the turn into Fryer Street which is left of this junction. Keep on Broad Street for 200 yards until you reach a mini roundabout, turn left at this roundabout and then left again into Lichfield Street, the hotel is situated 200 yards on the right hand, there is a small lay by outside the hotel for set down only.

Directions from the M6 Junction 12 (from the North) join the A449 which takes you to Wolverhampton City Centre. The A449 is a dual carriageway direct to the City Centre. As you approach the city centre you will notice the University building on the right hand side, there will be traffic lights to the ring road in front of you. Go through these traffic lights which takes you into Stafford Street, go through pedestrian lights and a mini roundabout (Princess Square) until you face some more traffic lights, at these turn left into Lichfield Street, the hotel is situated 200 yards on the right hand, there is a small lay by outside the hotel for set down only.