



**BRITANNIAHOTELS** 

*Meetings and Events Brochure*

**Wolverhampton**

[britanniahotels.com/conference-events](http://britanniahotels.com/conference-events)

Email: [Conf706@britanniahotels.com](mailto:Conf706@britanniahotels.com)  
Tel 01902 429922



**BRITANNIAHOTELS** 

## Wolverhampton

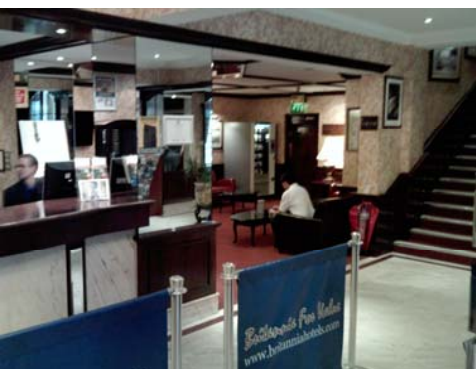


The Britannia Wolverhampton Hotel is a stylish Victorian building located in the centre of the city. The location is ideal for Wolverhampton University, the Mander Shopping centre and is conveniently based just five minutes walk from St Georges Metro Station.

The Britannia Wolverhampton hotel offers 117 en-suite comfortably furnished rooms with modern facilities including TV, Telephone and Tea & Coffee making facilities.

The Hotel features Jennys Restaurant, serving Breakfast, Lunch and Dinner offering an array of culinary delights from a la carte to lighter meals. The Stage Door Bar is a popular meeting place, with a wide range of fine wines, beers, spirits and soft drinks, perfect for a drink before or after a visit to the Theatre, or to recharge your batteries during a shopping break.

The Britannia Wolverhampton Hotel is a fantastic corporate venue in with six Conference, Meeting and Banqueting rooms. The rooms are capable of holding up to 250 people and can be arranged for all styles of meeting. The conference facilities for this hotel are first class and we can offer fantastic corporate rates for business travel. WIFI is also available FREE of charge throughout the hotels public areas and conference rooms.



[britanniahotels.com/conference-events](http://britanniahotels.com/conference-events)



# Meetings and Events at the Britannia Hotel Wolverhampton

The hotel is located 2 minutes walk from the Wolverhampton Train Station. Also within a 5 minute walk of the St Georges' Metro Station. If your travelling by car only 6 miles from the M6 J10.

The Britannia Wolverhampton offers 6 spacious meeting rooms which can cater up to 250 people.

Free WiFi in all meeting rooms.

## DAY DELEGATE RATES – from only £19.95 PER PERSON

- Welcome Tea/Coffee
- 3 course Hot or Cold Buffet lunch in Jenny's Restaurant
- Tea/Coffee with biscuits mid afternoon
- Use of Flip Chart, OHP, Screen, pens and paper, name cards, iced water, cordials

## 24 HOUR DELEGATE RATES – from only £19.95 PER PERSON

- All of the Day Delegate Package
- Dinner in our Jenny's Restaurant which consists of three courses
- Overnight Accommodation
- Full English Buffet Breakfast

## *Room Layouts and capacities*



**BOARDROOM STYLE**



**U SHAPE STYLE**



**CABARET STYLE**



**CLASSROOM STYLE**



**THEATRE STYLE**

	VICTORIA	REGENCY	CANTERBURY	AMBASSADOR	PARK	HAYMARKET
<b>FLOOR</b>	1	1	G	1	1	G
<b>MAX CAPACITY</b>						
<b>THEATRE</b>	250	125	60	35	35	20
<b>CLASSROOM</b>	160	50	25	12	12	8
<b>BOARDROOM</b>	75	50	30	16	16	10
<b>BANQUET</b>	130	80	30	16	16	10
<b>DINNER</b>	130	80	-	-	-	-
<b>U SHAPE</b>	70	45	25	12	12	6
<b>LENGTH (M)</b>	19	16.3	10.5	9	8.5	5.6
<b>WIDTH (M)</b>	10	7.5	5.5	4.3	6	4.3
<b>HEIGHT (M)</b>	3.7	3	2.4	3	3	2.4
<b>FIXED STAGE</b>	N	N	N	N	N	N
<b>OBSTACLES</b>	Y	N	N	N	N	N

## Accommodation

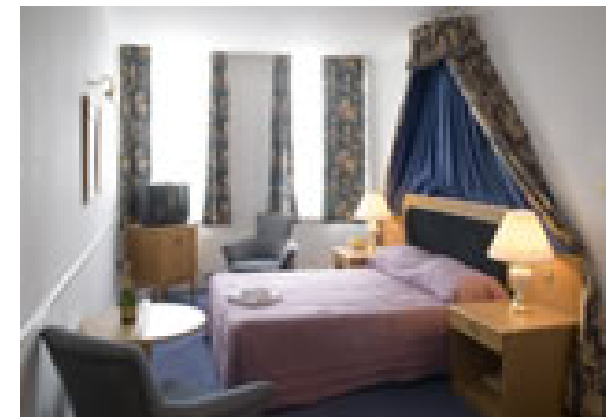


The Britannia Wolverhampton Hotel boasts 117 spacious bedrooms, which demonstrate the Victorian character of the property.

A variety of rooms are available to suit all budgets from Economy to Suite rooms, and multi person rooms are all ready and awaiting your delegates. All bedrooms offer full services and full facilities.

All rooms offer as standard

- TV
- Direct Dial Telephone
- Hair Dryer
- Trouser Press
- Tea & Coffee Making Facilities.
- Bath / Shower
- Work Space



## *How to find us.*

Directions from the M54 Junction 2 Leave at this junction and follow the A449 Stafford Road to Wolverhampton City Centre. The A449 is a dual carriageway direct to the City Centre. As you approach the city centre you will notice the University building on the right hand side, there will be traffic lights to the ring road in front of you. Go through these traffic lights which takes you into Stafford Street, go through pedestrian lights and a mini roundabout (Princess Square) until you face some more traffic lights, at these turn left into Lichfield Street, the hotel is situated 200 yards on the right hand, there is a small lay by outside the hotel for set down only.

Directions from the M54 Junction 3 Leave at this junction and follow the A41 direct into Wolverhampton City Centre, At Chapel Ash Island roundabout take the 1st exit onto the A4150 (signposted Ring Road, Stafford, Cannock) at the second set of traffic lights on the ring road turn right on to Stafford street, go through pedestrian lights and a mini roundabout until you face some more traffic lights, at these turn left into Lichfield Street, the hotel is situated 200 yards on the right hand, there is a small lay by outside the hotel for set down only.

Directions from the M6 Junction 10 (from the South) join the A454 and follow signs into Wolverhampton. As you come to the ring road take the fourth exit from the roundabout signed British Rail and University. Follow the ring road until the next set of traffic lights, turn left and keep straight on, this is Broad Street, do not take the turn into Fryer Street which is left of this junction. Keep on Broad Street for 200 yards until you reach a mini roundabout, turn left at this roundabout and then left again into Lichfield Street, the hotel is situated 200 yards on the right hand, there is a small lay by outside the hotel for set down only.

Directions from the M6 Junction 12 (from the North) join the A449 which takes you to Wolverhampton City Centre. The A449 is a dual carriageway direct to the City Centre. As you approach the city centre you will notice the University building on the right hand side, there will be traffic lights to the ring road in front of you. Go through these traffic lights which takes you into Stafford Street, go through pedestrian lights and a mini roundabout (Princess Square) until you face some more traffic lights, at these turn left into Lichfield Street, the hotel is situated 200 yards on the right hand, there is a small lay by outside the hotel for set down only.